

# MANZANA - PALACIO DE SAN CARLOS



LOCALIZACION

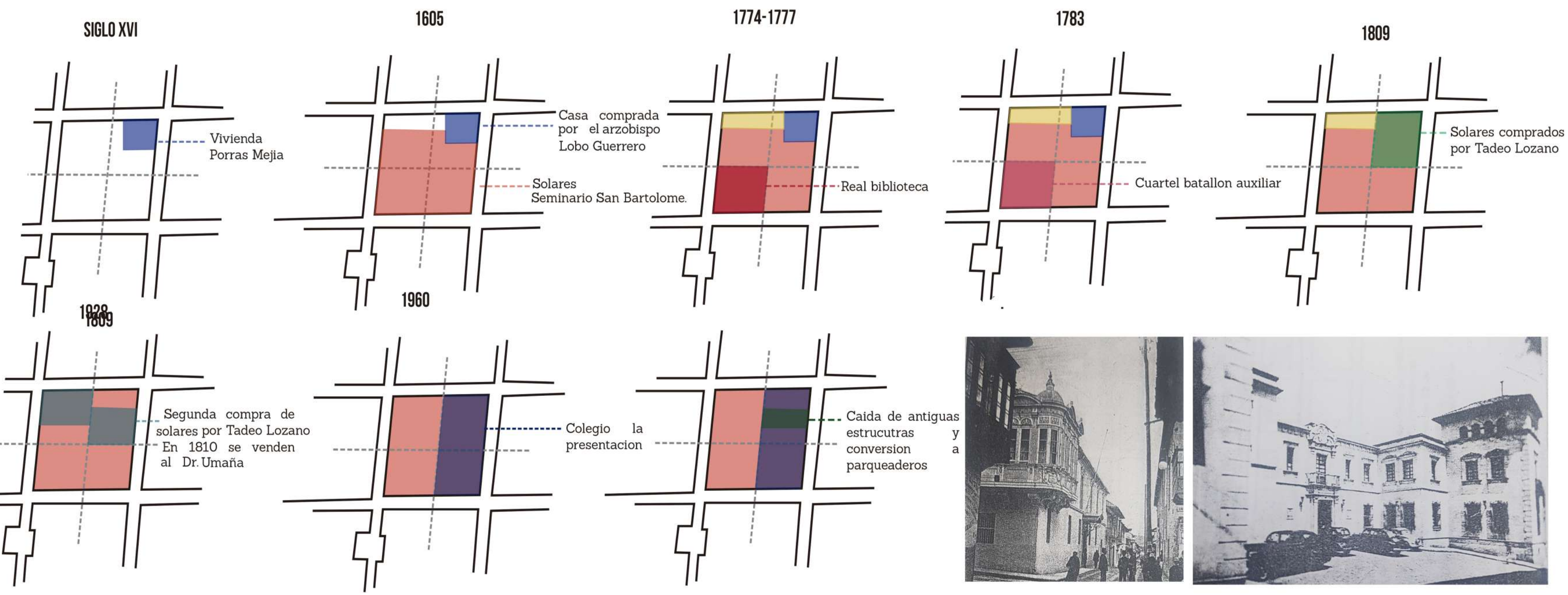
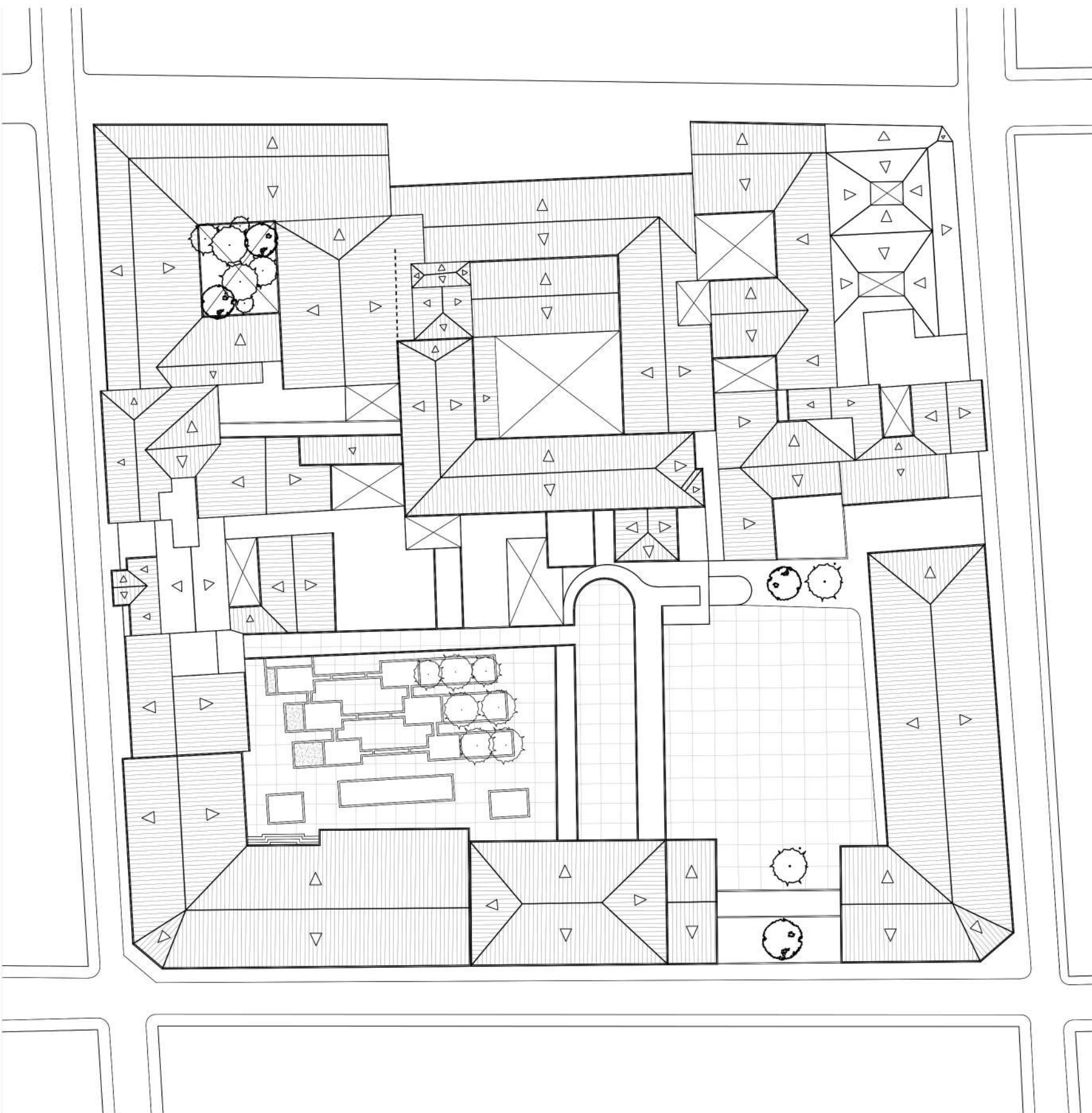


LLENOS Y VACIOS

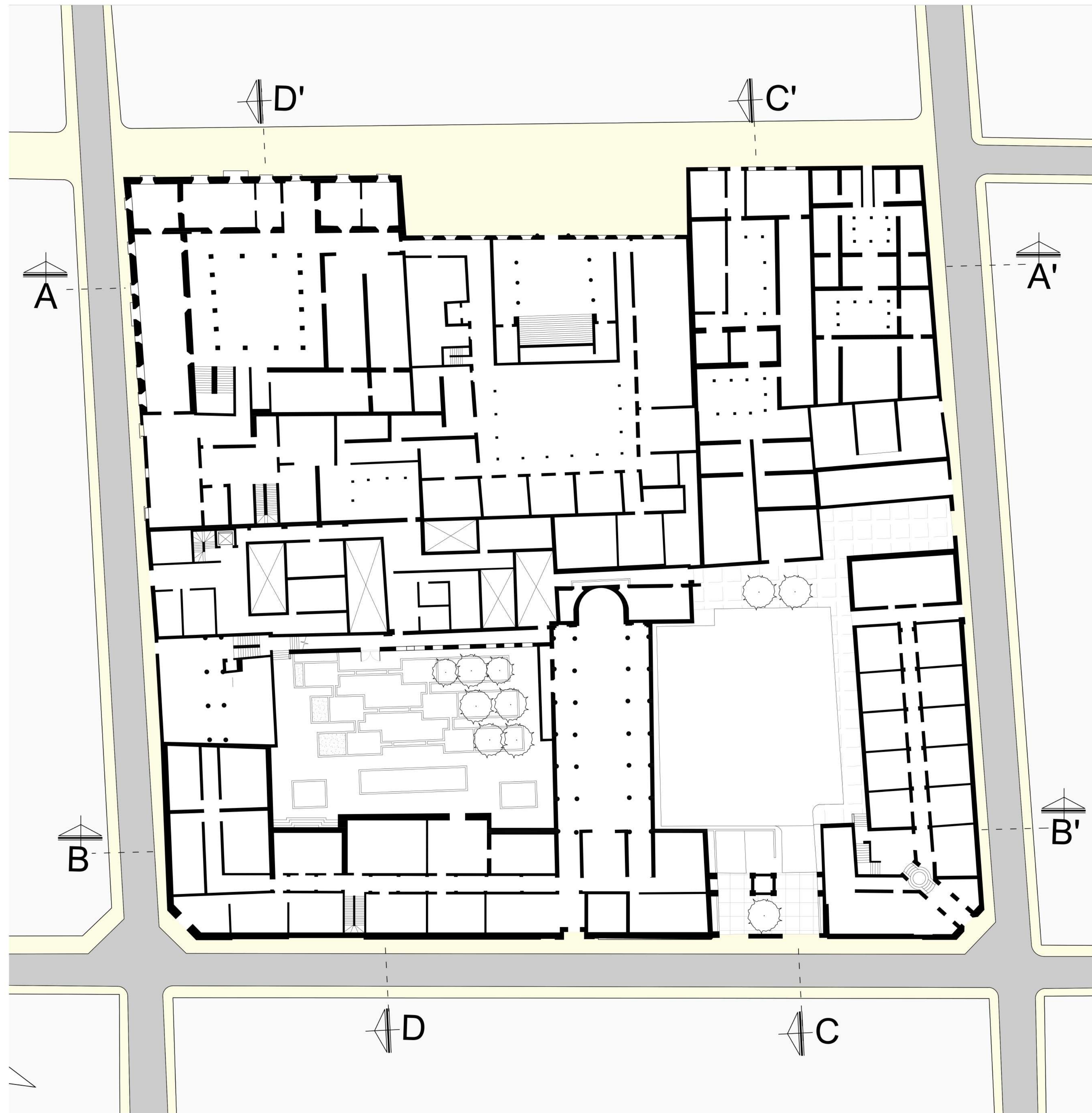


ELEMENTOS ATIPICOS DE LA MANZANA

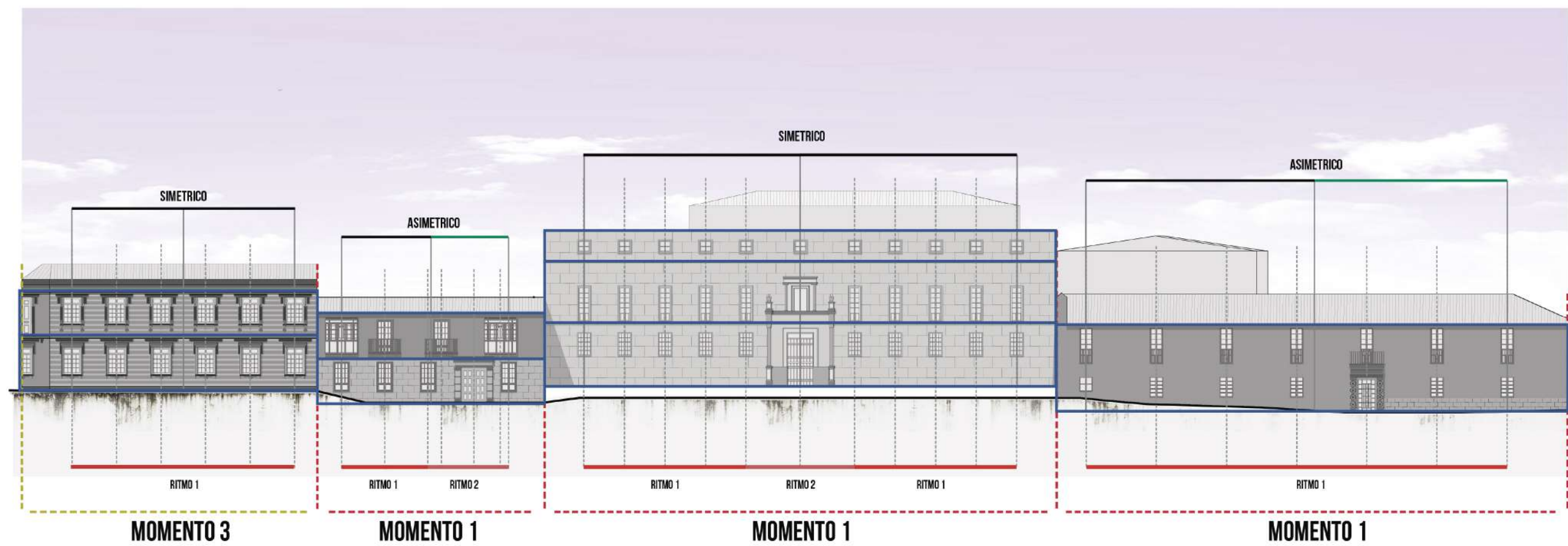
## PLANTA DE CUBIERTAS - ESC 1:600



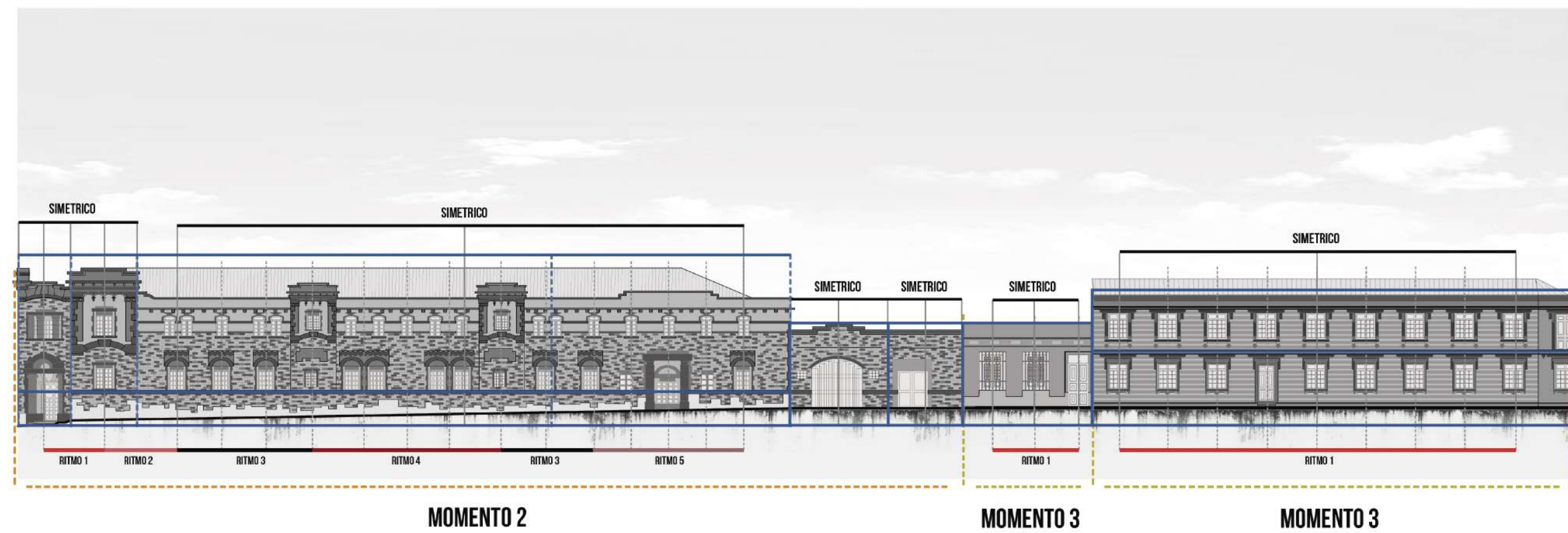
## PLANTA GENERAL - ESC 1:300



## FACHADA CALLE 10 ESC: 350



## FACHADA CARRERA 5 ESC: 350



## FACHADA CALLE 9 ESC: 350



## FACHADA CARRERA 5 ESC: 350

